

# Bluetooth Xpress Wireless Interface



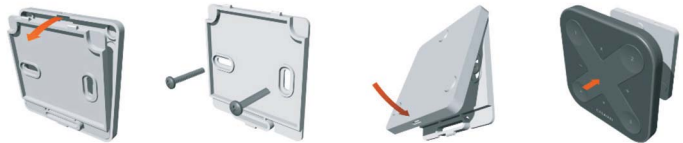
## Bluetooth

Xpress is a wireless user interface that brings huge flexibility to interior design as furniture can be replaced or even walls can be rebuilt without having to take wiring of switches or switch placement into account. The switch can be kept wherever the user needs it and it gives direct access to all the important Casambi lighting control functionalities.



Code	Colour	Range	Battery (incl.)	Battery Lifetime	Dimensions
CDS.191	White	up to 60m in open air	CR2430 Lithium coin cell	2-5 years, depending on usage	90x90x12mm
CDS.192	Black				

Xpress is equipped with magnets for easy attachment to a mounting bracket. The mounting bracket is included.



- ➔ Different Casambi enabled products can be used from a simple one luminaire direct control to a complete and full featured light control system where up to 127 units form automatically an intelligent mesh network.
- ➔ Casambi products, should not be placed in a metal enclosure or next to large metal structures. Metal will effectively block all radio signals which are crucial to the operation of the product.

## Range

CASAMBI



Casambi uses mesh network technology so each Casambi product acts also as a repeater. Longer ranges can be achieved by using multiple Casambi units.

\* Range is highly depended on the surrounding and obstacles, such as walls and building materials.

\*\*150m range can only be achieved between Casambi devices in evolution networks operating in long range mode in open air.



### Compatible devices:

iPhone iOS 10.0 or later, iPad iPadOS 10.0 or later, Mac macOS 11.0 or later  
Android 4.4 KitKat or later devices with full BT 4.0 support

app available on:

