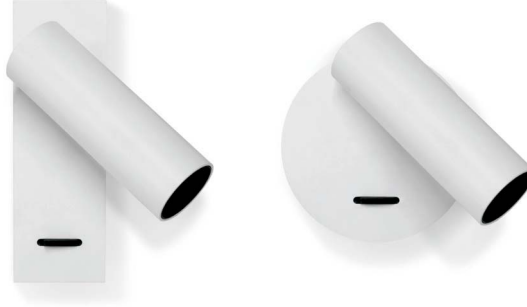
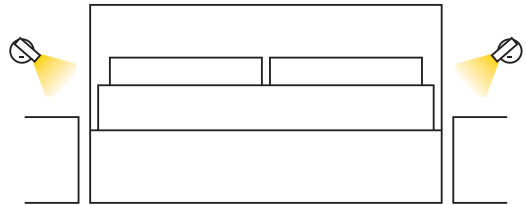
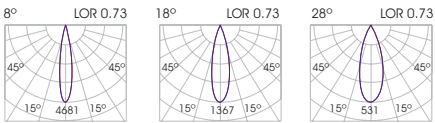


- Recessed slim wall light available in round or rectangular shape.
- Ideal to be used as a reading light.
- Available in different degrees.

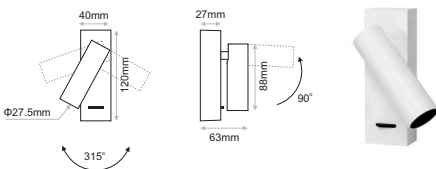


Model	Shape	CCT	CRI80, CRI90 LED Source		Beam Angle	Colour	Voltage
			80 (80)	90 (90)			
<b>STAY Surface 2W</b> <i>(STAY SF2)</i>	Round <i>(RD)</i>	2700K <i>(27C)</i>	160lm	150lm	8° <i>(08)</i>	White <i>(WH)</i>	230V Non Dimmable <i>(230ND)</i>
	Rectangular <i>(RT)</i>	3000K <i>(30C)</i>	165lm	157lm	18° <i>(18)</i>	Black <i>(BL)</i>	
		4000K <i>(40C)</i>	170lm	165lm	28° <i>(28)</i>	Chrome <i>(CH)</i>	

Ordering Code Example: *STAY SF2-RD-30C-90-18-BL-230ND*



Rectangular



Round

