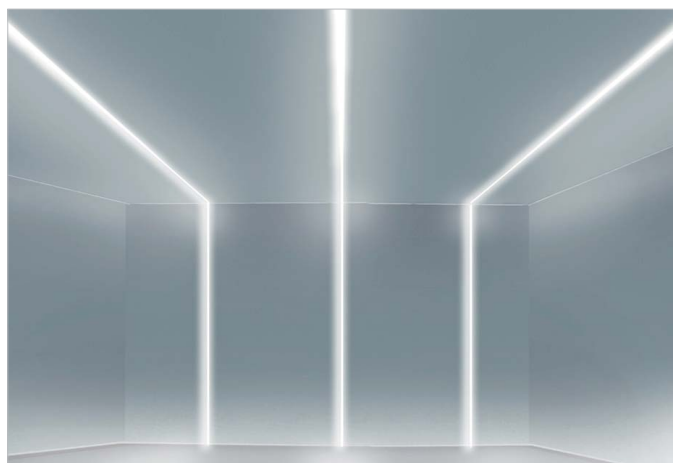
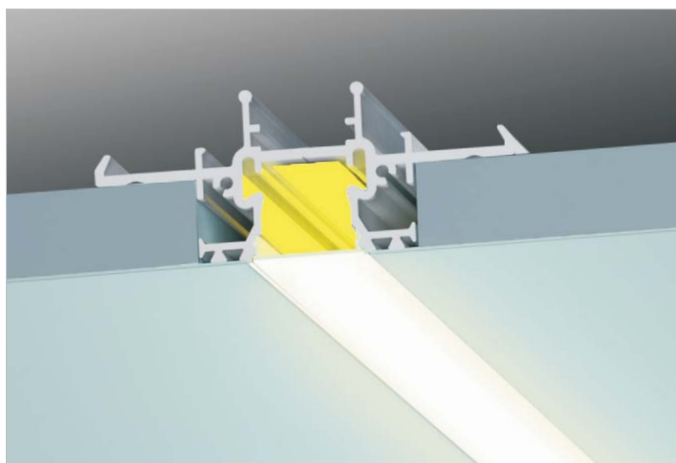
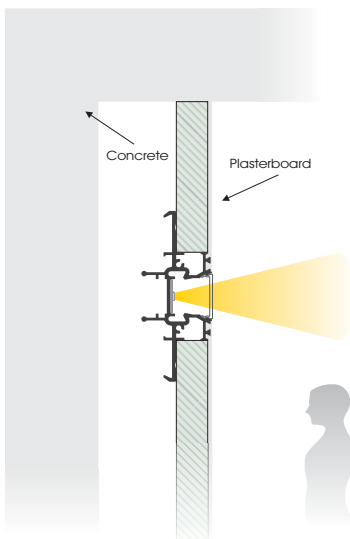
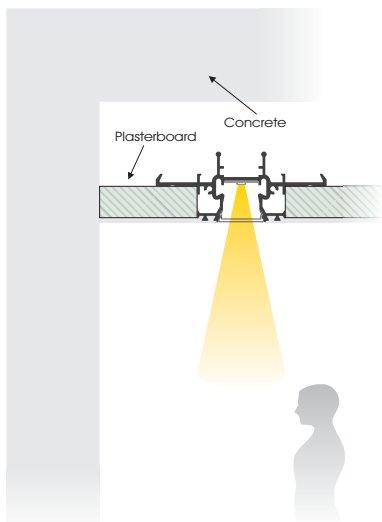
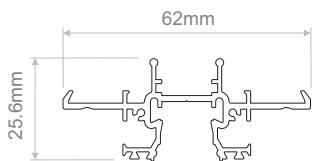


LUNGO

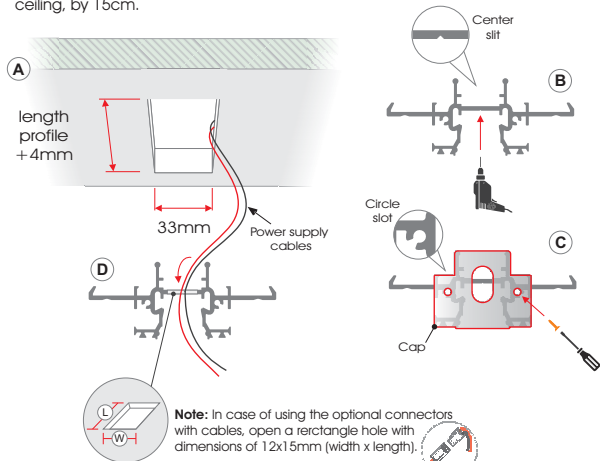
Installation guide



LUNGO Installation guide

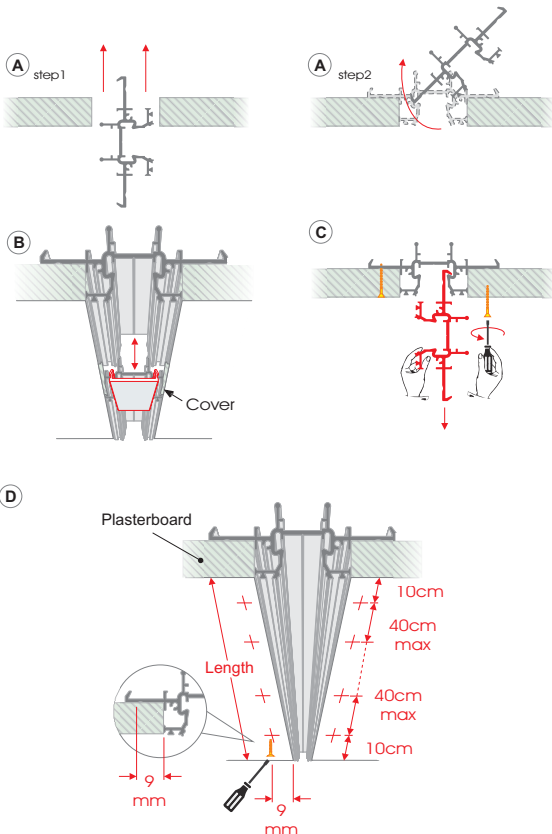
1 In order to mount the profile on a plasterboard ceiling, follow the steps below.

- Open the appropriate size of hole on ceiling, according to the dimensions provided below and the length of the profile.
- On the center slit of the profile, open a hole $\varnothing 10-12\text{mm}$ with its center at a distance of 6.5mm from the end of the profile, in order to pass through the led strip power supply cables.
- Mount the caps on each end of the profile and screw them, on the circle slots.
- Pass through the profile's hole the power supply cables that come from the ceiling, by 15cm.

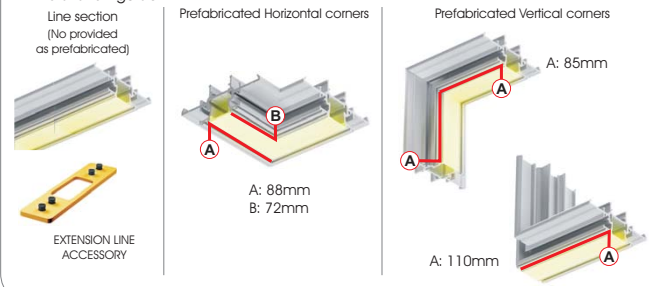


! Pay attention to the appropriate distance, between the rectangle hole and the profile's end, in order to mate with the holes on extension accessory, where they are used.

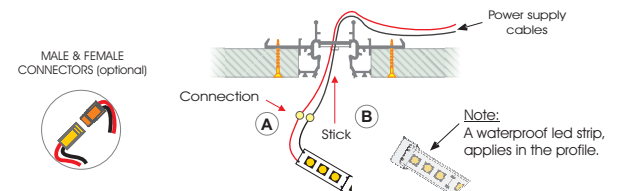
- Pass through the ceiling hole the profile, in a way that illustrated below.
- In order to align the end of the profile with another one, attach a small piece of the cover as illustrated below and mate the ends.
- Cut a small piece of the profile about 50mm length and use it as a tool for resistance while screwing the profile on plasterboard, as illustrated below.
- Screw the appropriate number of self-drilling screws (size #4), according to the measurements provided below.



3 In order to create corners and/or extensions with the profile, it is needed to obtain the appropriate prefabricated corner and/or the extension line accessory for every use. For more details, please refer to "LUNGO" aluminium profiles section of the catalogue contents and for installation refer to "PREFABRICATED CORNERS" installation guide.

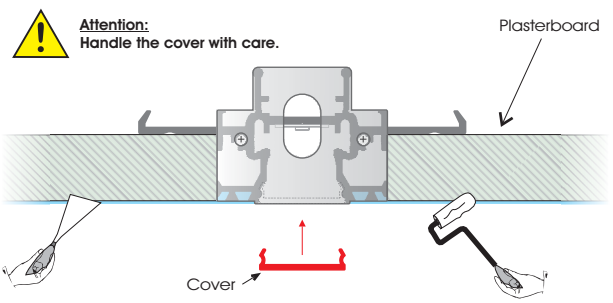


- Connect the power supply cables with the led cables and push them back into the hole (you can use the optional connectors with cables for easier connection).
- Stick the led strip along the profile, at the place that is illustrated below.



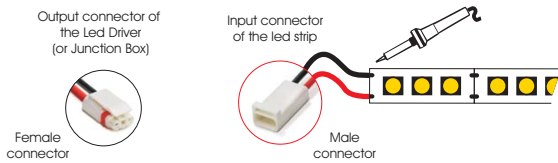
! **Attention:** Follow the preparation guide of the ledstrip and be sure that the cables are isolated properly, between them.

5 Apply the final coat on the plasterboard, paint and finally place the cover.

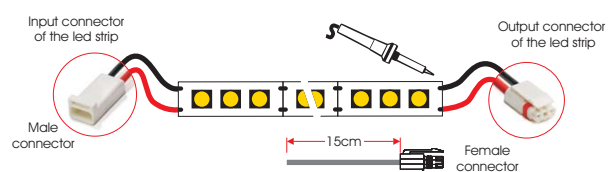


Wiring guide

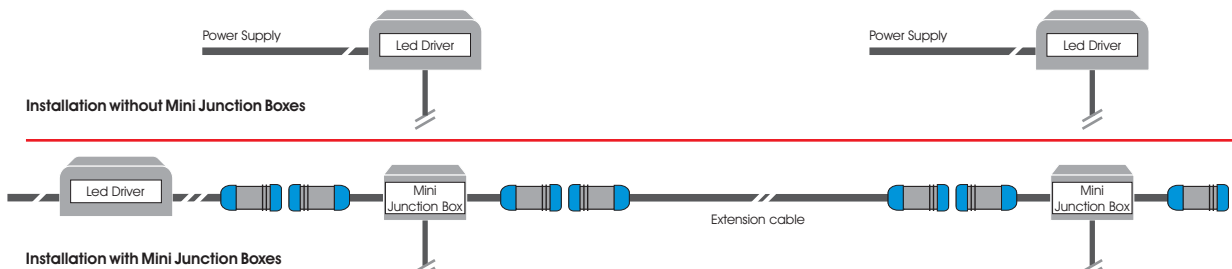
- 1 Solder the cables of the male connector, on the led strip pads and take care to insulate the soldered pads properly, according to the "Led strip preparation guide". The male connector will be connected with the female connector of the Led Driver (or Junction Box).



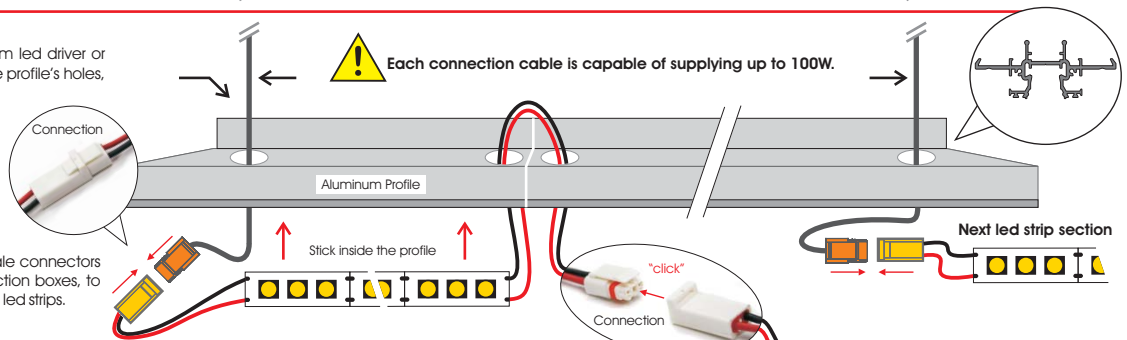
- 2 To connect more led strips in series, use one female connector with cutted cables, leaving about 15cm and one male connector. Solder them on each side of the led strip and take care to insulate the soldered pads properly, according to the "Led strip preparation guide" ..



- 3 A. Place and mount the led drivers or junction boxes, near the points where the led strip has to be supplied. In case of not using the junction boxes, proceed to step-B. In other case, using the junction boxes, connect the first one with the led driver and the rest with the extension cables, as the graphic illustrates below.



- B. Pass the connectors from led driver or junction boxes, through the profile's holes, by 10-15cm.



- C. Then connect the female connectors from the led drivers or junction boxes, to the male connectors of the led strips.

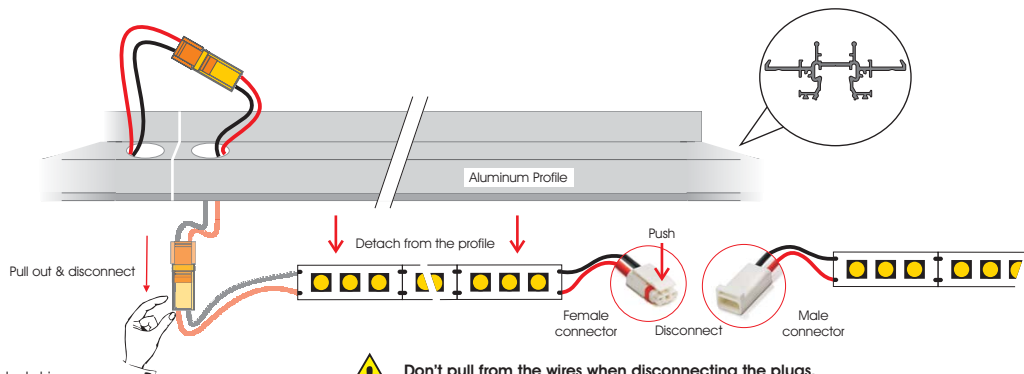
- D. Take off the masking tape from the bottom of the led strip and gradually place the led strip inside the aluminum profile. It is important for the bottom side of the led strip to make perfect contact with the aluminum profile. Be aware that the beginning / end of the led strip has to be close to the aluminum holes.

- E. If another led strip follows, pass the female connector from both aluminum holes and connect it with the male connector from the next led strip.

- G. Place the cover to the aluminum profile.

Replacement guide for led strips

- 4 A. Remove the cover from the aluminum profile.
B. Detach the specific led strip that needs to be replaced from the aluminum profile.



- E. Follow steps 1 - 2 to prepare the led strip and step 3 to finish the replacement of it.



PREFABRICATED CORNERS Installation guide

- Use the appropriate prefabricated corner, for each use

Vertical corners
ACC.111 VERTICAL-O ACC.112 VERTICAL-I

Horizontal corners
ACC.113 HORIZONTAL
- Unmount Cover

Lungo-profile corner

Prefabricated Corner one side

Prefabricated Corner other side

Cover
- Plasterboard Lungo-profile corner

Use tool for resistance
- Align

Lungo-profile corner

Lungo-profile straight

Extension line accessory

Slide
- Screw

Slide in the middle
- Plasterboard

Lungo-profile straight

10cm

40cm max

40cm max

10cm

Mark

9 mm

9 mm
- Screw
- Power supply cables

Stick

Connect & insulate
- Plasterboard on the other side of Lungo profile

Mark

Use tool for resistance

Screw
- Handle with care

Clip

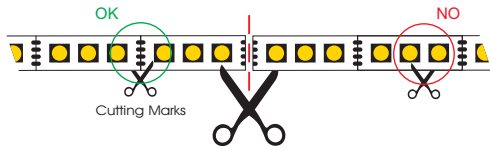
Cover



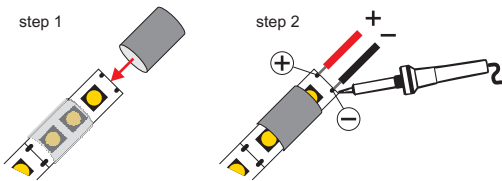
LED STRIP Preparation guide

Non-Waterproof Led strip

1 Cut the led strip at the desired length, only at the cutting marks.



2 Insert the heat-shrinkable tubing, at the side of the led strip, where the cables will be soldered. Then, solder the cables on the led strip's pads.

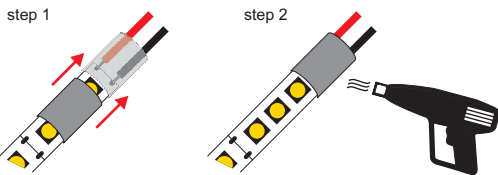


Attention

- Mind the polarity of the cables.
- The common cable is positive (+) for common anode led strips and negative (-) for common cathode led strips.
- The actual colors and the order of the cables, may be different.

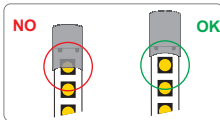


3 Slide the heat-shrinkable tubing, to cover the soldered led strip's pads. Then, heat the heat-shrinkable tubing in order to shrunk and wrap the led strip.



Attention

Do not cover the led, with the heat-shrinkable tubing.

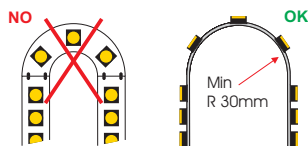


4 Remove gradually the masking tape and stick the led strip on the desired surface.



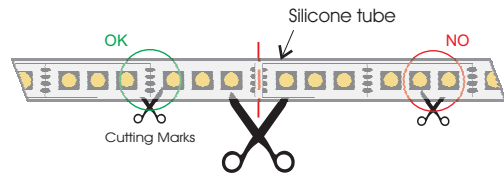
Attention

Avoid bending the led strip in any wrong way.

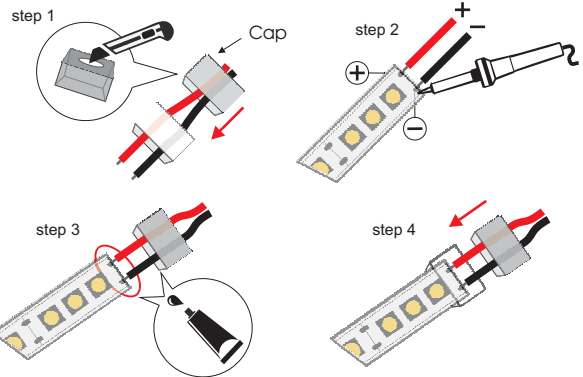


Waterproof Led strip

1 Cut the waterproof led strip at the desired length, only at the cutting marks.



2 Make a small slice on the cap's back, to pass through, the cables. Solder the cables on the pads of the led strip. Remove a small piece (as long as the length of the cap covers) from the stick tape. Apply a small amount of silicone sealant on the outer side of the silicone tube, inside the cap and on the cap's slice. Push the cap to fit in the silicone tube.

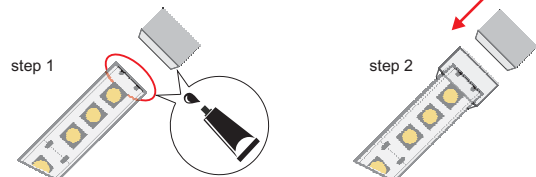


Attention

- Mind the polarity of the cables.
- The common cable is positive (+) for common anode led strips and negative (-) for common cathode led strips.
- The actual colors and the order of the cables, may be different.



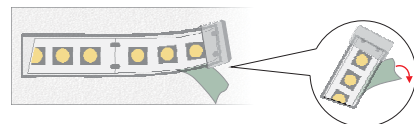
3 At the end side of the led strip, where no cables exist, apply a small amount of silicone sealant on the outer side of the silicone tube and inside the cap. Push the cap to fit in the silicone tube.



Attention

To ensure the product's degree of protection, it is needed to perform the siliconization procedure, correctly. Otherwise the degree of protection may be different from product's specifications.

4 Remove gradually the masking tape and stick the led strip on the desired surface.



Attention

Avoid bending the led strip in any wrong way.

