

OUTLINER SERIES (20/30/40/50) Aluminium Profile

Assembly Guide

The assembly guide refers to the following models:



OUTLINER 20 is presented below as an example.

Cut the OUTLINER 20 aluminium profile in the desirable length, plus 1 cm length on each side (total 2cm more). Then follow the steps below for each case.

1 Back exit of the cable

A

*Ø 4.5-6mm Through
5mm

*Depends on outer cable diameter

B

Cable

C

LED strip

D

Attention
Follow the LED strip preparation guide on page 2 and be sure that the cables are isolated properly between them.

For LED strip with total length up to 5m

For LED strip with total length >5m

E

Glue the cable

F

End Cap

Attention
Use the cap without hole, on both ends.

G

Cover

H

Attention
For mounting installation refer to OUTLINER / OUTLINER IP67 SERIES installation guide

2 Side exit of the cable

A

LED strip

B

Cable

Attention
Follow the LED strip preparation guide on page 2 and be sure that the cables are isolated properly between them.

For LED strip with total length up to 5m

For LED strip with total length >5m

C

End Cap

Glue the cable (inner side)

Front Cap

Cable

Attention
Use the front cap (with hole), on the luminaire side with the cable.

D

Cover

E

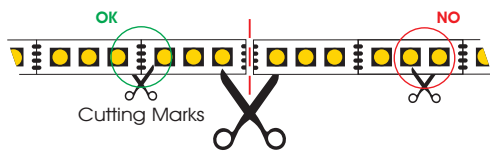
Attention
For mounting installation refer to OUTLINER / OUTLINER IP67 SERIES installation guide

OUTLINER SERIES Aluminium Profile

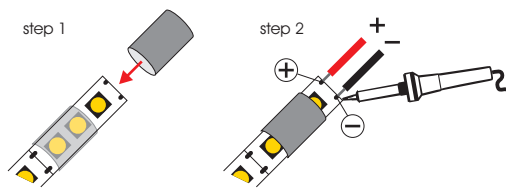
LED strip preparation guide

Non-waterproof LED strip

1 Cut the led strip at the desired length, only at the cutting marks.



2 Insert the heat-shrinkable tubing, at the side of the led strip, where the cables will be soldered. Then, solder the cables on the led strip's pads.

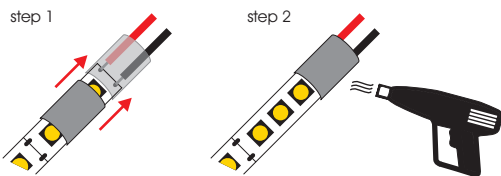


Attention

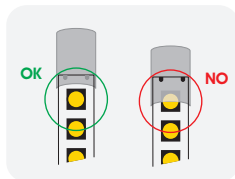
- Mind the polarity of the cables.
- The common cable is positive (+) for common anode led strips and negative (-) for common cathode led strips.
- The actual colors and the order of the cables, may be different.



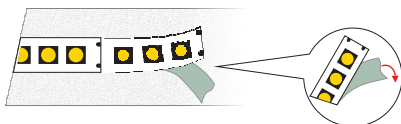
3 Slide the heat-shrinkable tubing, to cover the soldered led strip's pads. Then, heat the heat-shrinkable tubing in order to shrank and wrap the led strip.



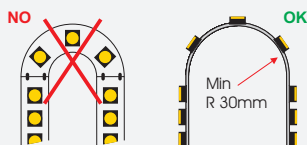
Attention
Do not cover the led, with the heat-shrinkable tubing.



4 Remove gradually the masking tape and stick the led strip on the desired surface.



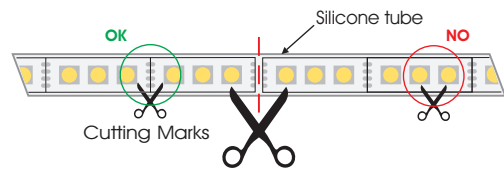
Attention
Avoid bending the led strip in any wrong way.



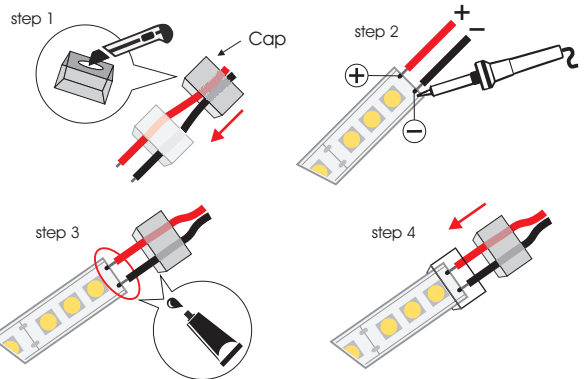
Waterproof LED strip (only monochromatic)



1 Cut the waterproof led strip at the desired length, only at the cutting marks.



2 Make a small slice on the cap's back, to pass through, the cables. Solder the cables on the pads of the led strip. Remove a small piece (as long as the length of the cap covers) from the stick tape. Apply a small amount of silicone sealant on the outer side of the silicone tube, inside the cap and on the cap's slice. Push the cap to fit in the silicone tube.

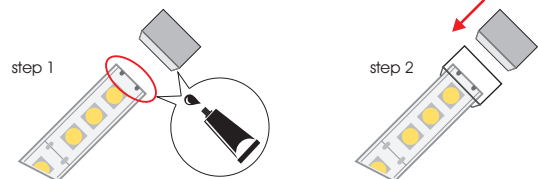


Attention

- Mind the polarity of the cables.
- The actual colors and the order of the cables, may be different.



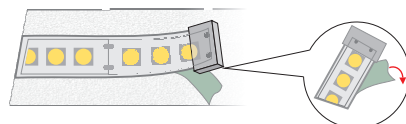
3 At the end side of the led strip, where no cables exist, apply a small amount of silicone sealant on the outer side of the silicone tube and inside the cap. Push the cap to fit in the silicone tube.



Attention

To ensure the product's degree of protection, it is needed to perform the silicization procedure, correctly. Otherwise the degree of protection may be different from product's specifications.

4 Remove gradually the masking tape and stick the led strip on the desired surface.



Attention
Avoid bending the led strip in any wrong way.

