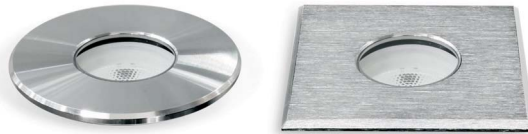


HYDRA is a small inground luminaire available with honeycomb as extra.

- Inground spot with honeycomb accessory.
- Housing: Die-cast powder coated aluminum.
- Front plate: Stainless steel 316
- Mounting box: plastic frame casing ABS 011.
- Glass: Tempered glass, T=7mm
- Cable gland: IP-68 PG-9 PA66
- Power cable: H05RN-F 2x1.0mm² L=0.5m
- IK Rate: 08
- Ingress Protection: IP67
- PWM Dimmable
- Number of LEDs: 1
- Power Consumption: 2.6Watt
- Maximum load 1700kgs



Model	CCT	Luminaire Lumen	Type	CRI	Beam Angle	Voltage	Accessories
HYDRA ROUND 2.6W <i>(HYDRA RD3)</i>	2700K (270)	115lm	Fixed (FX)	80 (80)	9° (09)	24VDC PWM Dimmable (24)	COVER Standard (0X) Honeycomb (1X) ↓ (XX) EXTRAS No Extras (0)
	3000K (300)	125lm			15° (15)		
	4000K (400)	135lm			20° (20)		
HYDRA SQUARE 2.6W <i>(HYDRA SQ3)</i>	5600K (560)	145lm			30° (30)		
					45° (45)		
					45°X35° (4535)		

Ordering Code Example: HYDRA RD3-300-80-30-FX-24-10

