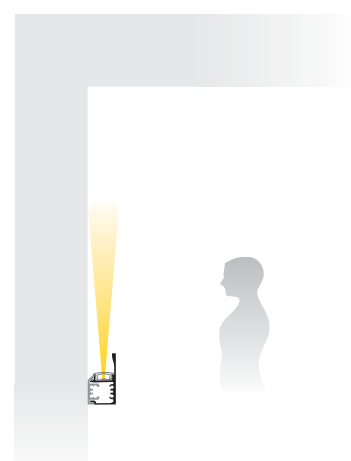
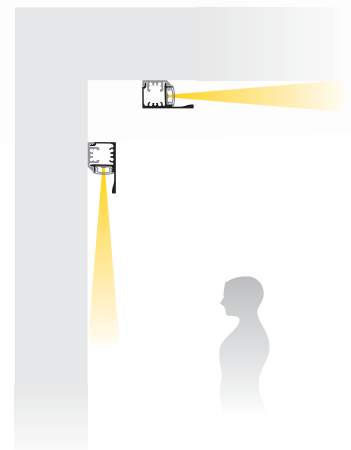
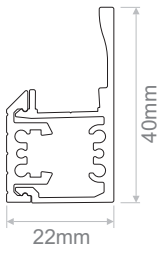


LIGUA 1

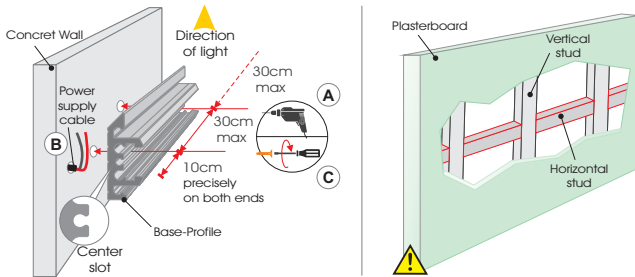
Installation guide



LIGUA 1 Installation guide

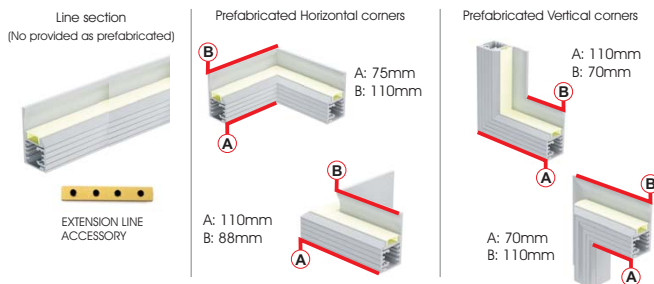
- In order to mount the Ligua1-profile on a wall, fasten the base-profile first.
 - Open the appropriate size and number of holes, across the center slot of the base-profile and on the wall, at a selected place, according to the measurements provided below.
 - If the power supply cable come out of the wall, open a hole $\varnothing 7\text{mm}$, on the center slot of the base-profile and pass the cable through it.
 - Fasten the base-profile with screws on the wall.

Mounting surface must be smooth and straight

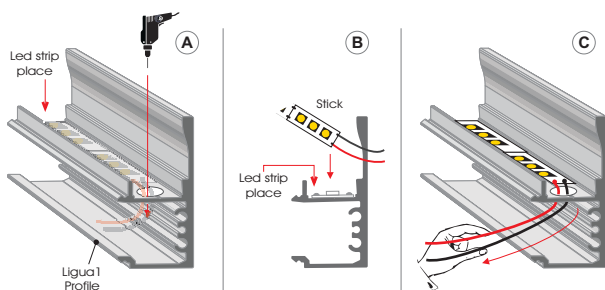


Attention:
In case of mounting the base-profile on plasterboard, it is necessary to reinforce the metal support structure with horizontal and/or vertical metal studs framing, in order for the entire base-profile to be supported by the metal studs

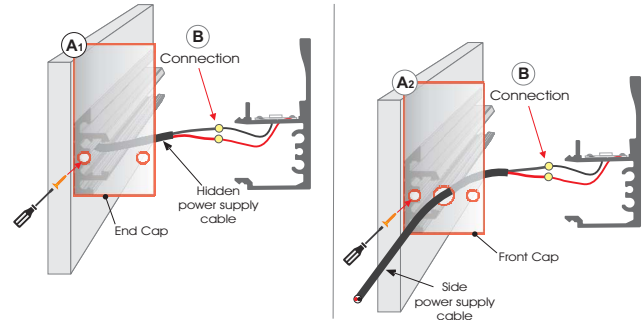
- In order to create corners and/or extensions with the profile, it is needed to obtain the appropriate prefabricated corner and/or the extension line accessory for every use. For more details, please refer to "LIGUA 1" aluminium profiles section of the catalogue contents and for installation refer to "PREFABRICATED CORNERS" installation guide.



- Using the slit of the Ligua1-profile for centering, open a hole $\varnothing 7\text{mm}$ close to the end of the profile, to pass through the led strip power supply cables.
 - Prepare properly the led strip, following the "LEDSTRIP" installation guide and stick it along the profile, at the place that it is illustrated below.
 - Pass through the hole, the led strip power supply cables.



- Screw the appropriate cap at one side of the base-profile, as illustrated below for each case.
 - In case of hidden power supply cable, use the end cap.
 - In case of side power supply cable, use the front cap.
 - Connect the power supply cable with the led strip cables.



Attention:

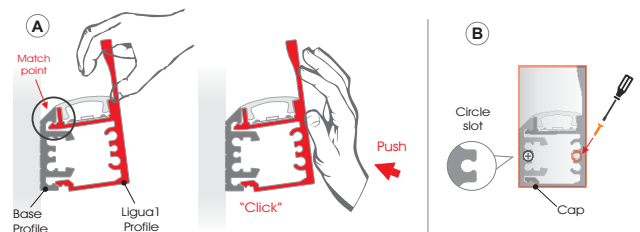
- Be sure that the cables are isolated properly, between them.
- Glue the side power supply cable on the front cap, at the import point, to secure position.

- Apply a thin coat of a non-transparency silicone on the edge of the Ligua1-profile, at a point that is illustrated below. This will prevent the light, to come out of the crevice between the profile's joints.
 - Place the cover at a point that is illustrated below, pressing it gradually all the way.



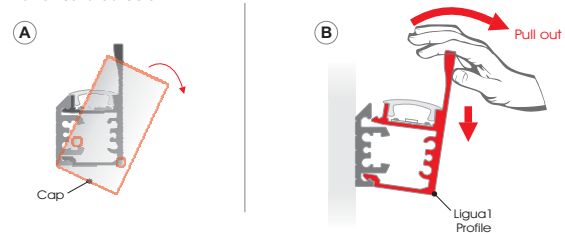
Note:
Swipe the overflow silicone before harden.

- To fasten the Ligua1-profile in place, first clip it on the base-profile at match point that the illustration shows. Then push the Ligua1-profile in a way that is illustrated below, while pushing up. Do not miss, to press it gradually across its length.
 - Screw the caps on each end of the profiles.



Attention:
Be sure to align, the ends of the profiles, because after fastening, they cannot slip. Prevent the cables from jamming between the profiles while mounting them.

- To unfasten the Ligua1-profile from its place, unscrew the caps on each side and remove them.
 - Pull out the Ligua1-profile of the base-profile while pushing down, in a way that is illustrated below.



PREFABRICATED CORNERS Installation guide

1. Use the appropriate prefabricated corner, for each use.

Prefabricated vertical corners	Prefabricated horizontal corners
<p>PRF.099 VERTICAL-O</p>	<p>PRF.101 HORIZONTAL-N</p>
<p>PRF.100 VERTICAL-I</p>	<p>PRF.102 HORIZONTAL-I</p>

2.

3.

4.

5.

6.

7.

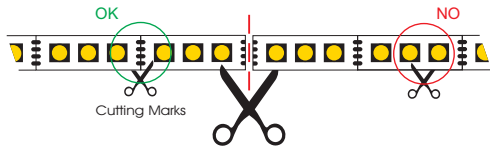
8.

9.

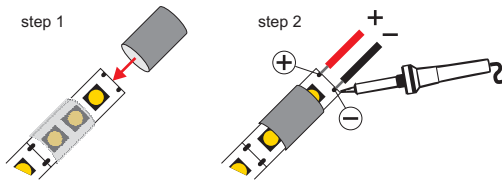


LEDSTRIP Installation guide

1 Cut the led strip at the desired length, only at the cutting marks.



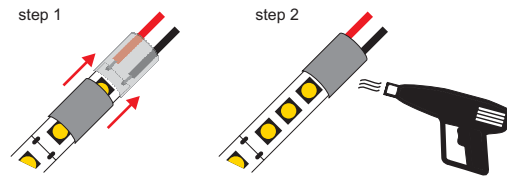
2 Insert the heat-shrinkable tubing, at the side of the led strip, where the cables will be soldered. Then, solder the cables on the led strip's pads.



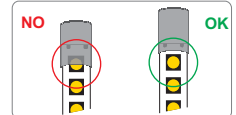
- Attention**
- Mind the polarity of the cables.
 - The common cable is positive (+) for common anode led strips and negative (-) for common cathode led strips.
 - The actual colors and the order of the cables, may be different.



3 Slide the heat-shrinkable tubing, to cover the soldered led strip's pads. Then, heat the heat-shrinkable tubing in order to shrink and wrap the led strip.



- Attention**
- Do not cover the led, with the heat-shrinkable tubing.



4 Remove gradually the masking tape and stick the led strip on the desired surface.

