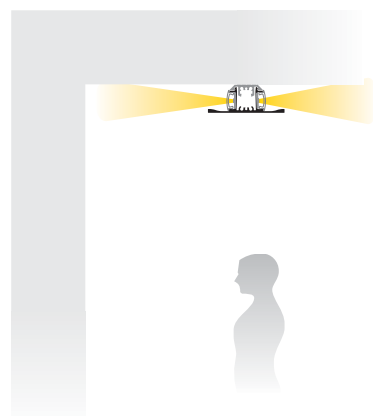
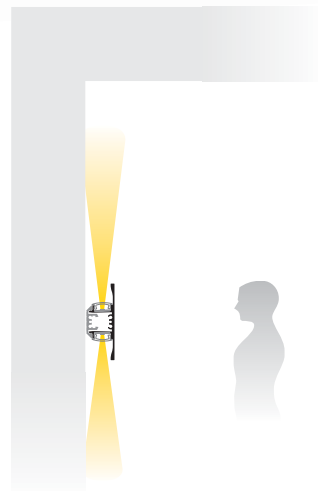
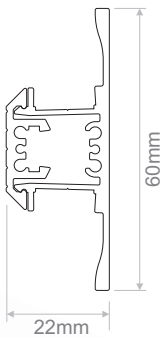


LIGUA 2

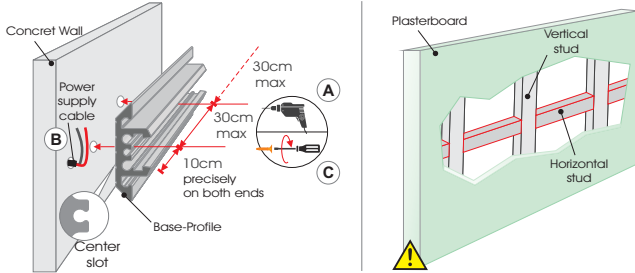
Installation guide



LIGUA 2 Installation guide

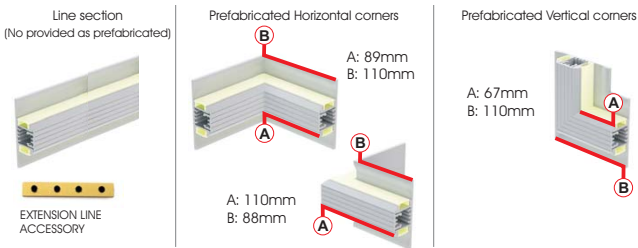
- In order to mount the Ligua 1-profile on a wall, fasten the base-profile first.
 - Open the appropriate size and number of holes, across the center slot of the base-profile and on the wall, at a selected place, according to the measurements provided below.
 - If the power supply cable come out of the wall, open a hole $\varnothing 7\text{mm}$, on the center slot of the base-profile and pass the cable through it.
 - Fasten the base-profile with screws on the wall.

Mounting surface must be smooth and straight

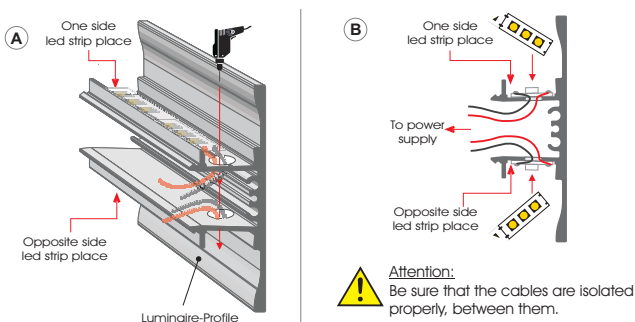


Attention:
In case of mounting the base-profile on plasterboard, it is necessary to reinforce the metal support structure with horizontal and/or vertical metal studs framing, in order for the entire base-profile to be supported by the metal studs.

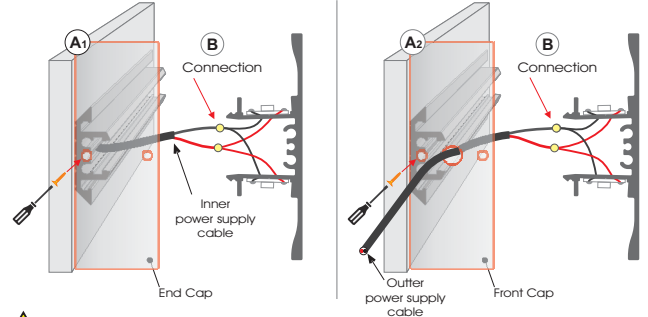
- In order to create corners and/or extensions with the profile, it is needed to obtain the appropriate prefabricated corner and/or the extension line accessory for every use. For more details, please refer to "LIGUA 2" aluminium profiles section of the catalogue contents and for installation refer to "PREFABRICATED CORNERS" installation guide.



- Using the slit of the luminaire-profile for centering, open a hole $\varnothing 8\text{mm}$ close to the end of the profile on both sides of the led strip's place, to pass through it the led strip power supply cables, as illustrated below. Prepare properly the led strip, following the "LEDSTRIP" installation guide.
 - Stick the led strips along the profile, at a place that it is illustrated below and pass through the holes, the led strip power supply cables of each side.

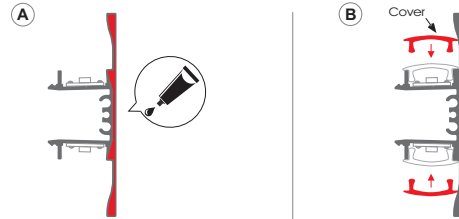


- Screw the appropriate cap at one side of the mount-profile, where the circle slots are, as illustrated below for each case.
 - In case of inner power supply cable, use the end cap.
 - In case of outer power supply cable, use the front cap.
- Connect the power supply cable with the led strip cables as illustrated below.

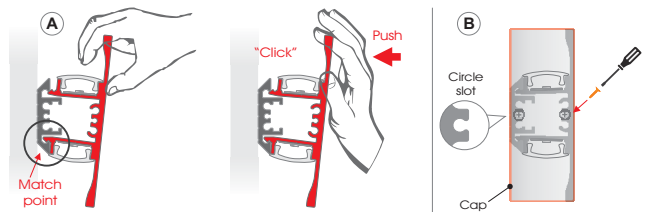


Attention:
Be sure that the cables are isolated properly, between them.
Glue the outer power supply cable at the import point on the front cap, to secure position. Be sure to be mate, the end sides of the two profiles.

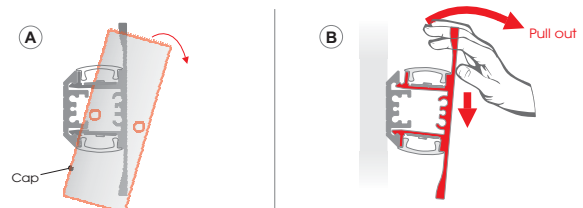
- Apply a thin coat of a non-transparency silicone on the edge cut of the luminaire-profile, at a point that is illustrated below. This will prevent the light, to come out of the crevice between the profile and the cap or between another profile after.
 - Place the cover at a point that is illustrated below, pressing it gradually all the way.



- To fasten the luminaire-profile in place, clip it on the mount-profile, in a way that is illustrated below. Do not miss, to press it gradually all the way.
 - To prevent the luminaire from unfasten, screw the caps on each end of the profile, where the circle slots are.

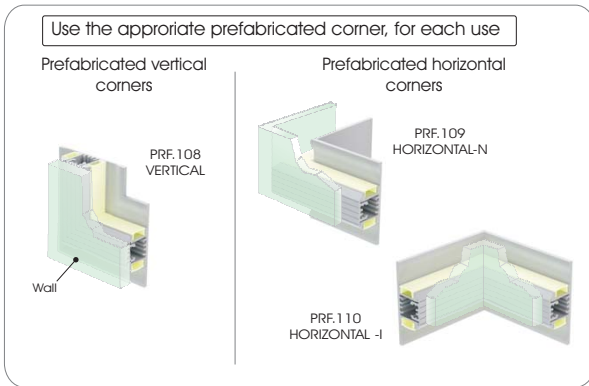


- To unfasten the luminaire-profile from its place, unscrew the caps on each side and remove them.
 - Pull out the luminaire-profile of the mount-profile while pushing down, in a way that is illustrated below.

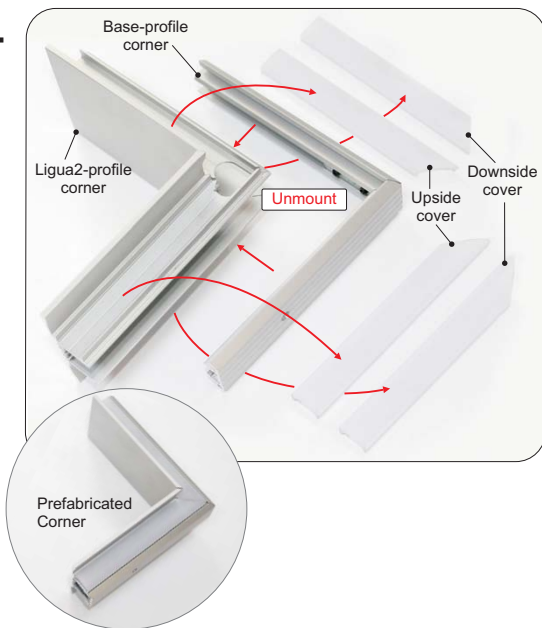


PREFABRICATED CORNERS Installation guide

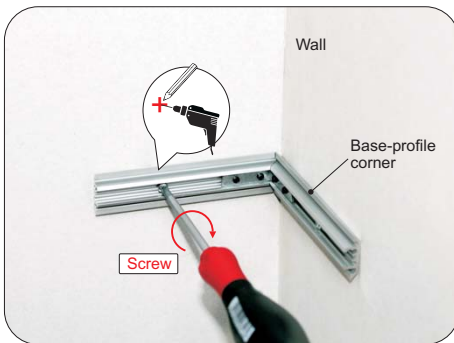
1.



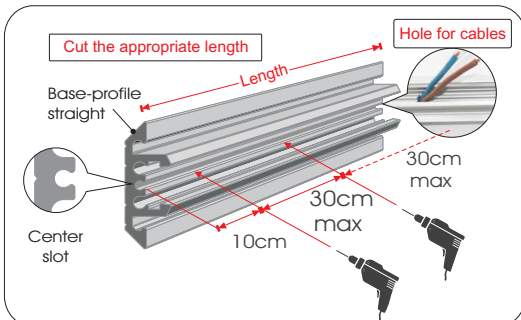
2.



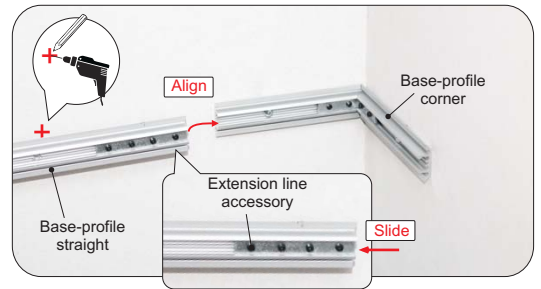
3.



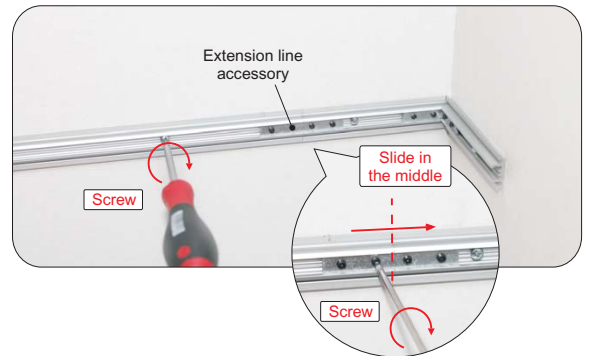
4.



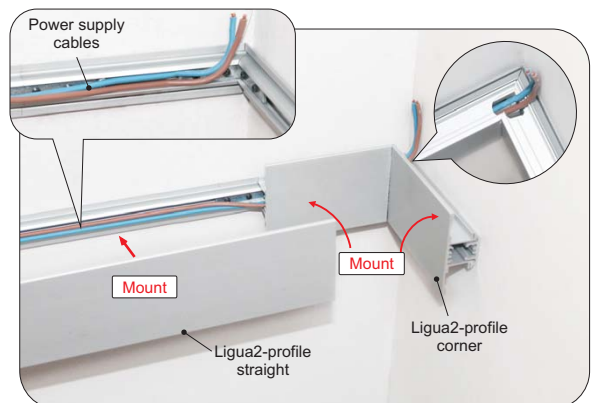
5.



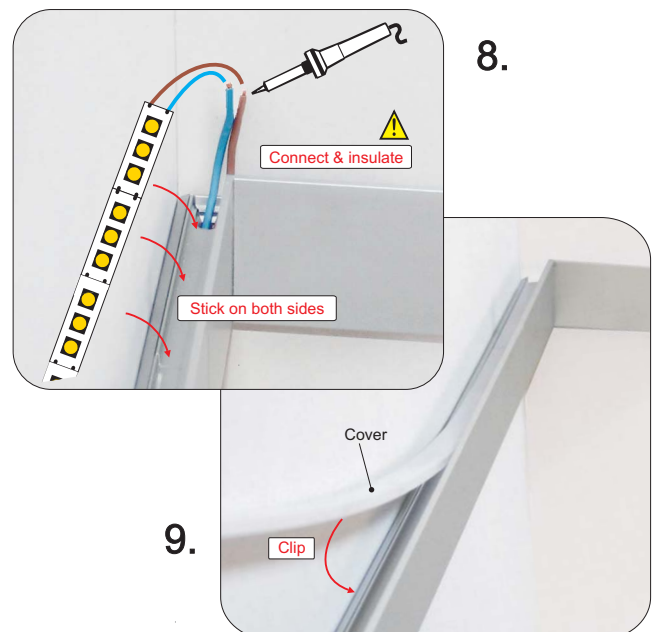
6.



7.



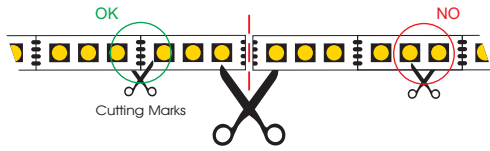
8.



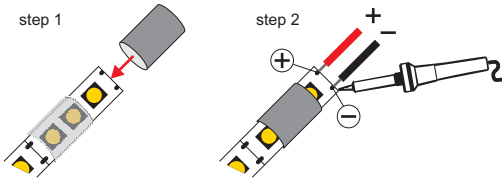
9.

LEDSTRIP Installation guide

1 Cut the led strip at the desired length, only at the cutting marks.



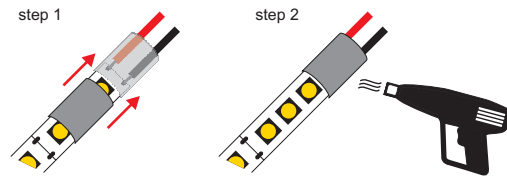
2 Insert the heat-shrinkable tubing, at the side of the led strip, where the cables will be soldered. Then, solder the cables on the led strip's pads.



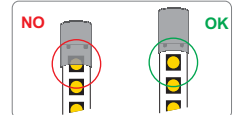
- Attention**
- Mind the polarity of the cables.
 - The common cable is positive (+) for common anode led strips and negative (-) for common cathode led strips.
 - The actual colors and the order of the cables, may be different.



3 Slide the heat-shrinkable tubing, to cover the soldered led strip's pads. Then, heat the heat-shrinkable tubing in order to shrink and wrap the led strip.



- Attention**
- Do not cover the led, with the heat-shrinkable tubing.



4 Remove gradually the masking tape and stick the led strip on the desired surface.

